

Regional Recycling School Grants



"ESTABLISHED 2016"

October 24, 2018

School Name: Pinnacle View Middle School

Address: 5701 Ranch Drive
Little Rock, AR 72223
501-447-8500

District: Little Rock School District

Current Student Enrollment: Nine Hundred 6th, 7th and 8th Graders

Contact:

Michael Poore, Superintendent
Little Rock School District
501-447-1000
810 West Markham
Little Rock, Arkansas 72201

Jay Pickering, Principal
Pinnacle View Middle School
501-447-8502
5701 Ranch Drive
Little Rock, AR 72223

Yvette Thompson, 6th Grade Science Teacher
Pinnacle View Middle School
yvette.thompson@lrsd.org
501-447-8512

Introduction:

This is year three for Pinnacle View Middle School! We are the newest middle school addition to the Little Rock School District and are continuing to grow and develop. During the 2016-2017 school year sixth graders were housed in the Leisure Arts Administrative Building of the campus. During this time the warehouse on campus was being renovated by Baldwin Shell to accommodate sixth and seventh graders for the school year 2017-2018. Phase II now houses nine hundred, fifty-three 6th, 7th and 8th grade students during the 2018-2019 school year.



Student and Staff Involvement:

With growth comes change. We continue to make adjustments as we grow and are finding new ways to enhance student interests outside of the classrooms before and after school. Student interest in Environmental Education and Gardening continues. I am continuing to sponsor the students who show interest in the Environmental Education portion of the original club in order to continue to “Reuse, Recycle and Repurpose” at PVMS. Students from my current and previous science classes and those who were in the PVMS Environmental Education and Gardening club are volunteering to come to school early to collect recycling and take it to the recycling bin which we have been able to keep another year. Students who are in my current 6th grade science classes also help with collection during the school day. The entire staff is collecting paper and other recyclables for the students to pick up weekly or more often depending on the delivery of textbooks and materials in cardboard boxes.



We have increased efforts to recycle more paper so students have provided all new teachers with a painted and labeled, textbook box for collection of recyclable materials such as copier paper, cardboard, plastic water bottles, plastic containers in the classrooms, offices and copier rooms.



During the past school year students repurposed cardboard boxes from shipments for props to be used in performances by the Drama/Theatre teacher year after year.



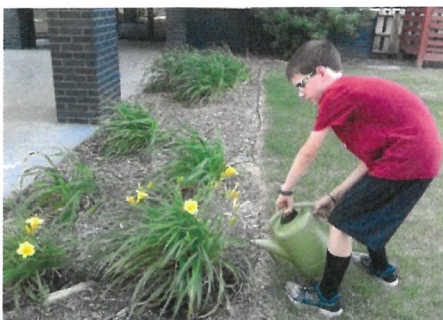
Dynamics:

The students who continue to volunteer are a reflection of the demographics of our school as a whole.



Ongoing Environmental Education (Reduce, Reuse, Recycle, Repurpose) and Gardening:

Since the opening of Pinnacle View Middle School our goal has been to establish a school community garden and to place emphasis on repurposing as many items as possible and to reuse as much as possible. Examples of this are the vegetable and perennial garden surrounding Phase I (Administrative Building).



Students continue to collect and reuse cardboard from shipments of furniture and textbooks in many creative ways. These are being used to support STEM projects throughout the school year. Students assisted in designing and engineering sets and stage props for the Drama/Theatre teacher and the G/T Teacher as well as use in the science classroom.



Coffee cans have been repurposed to hold plastic shopping bags for easy dispensing. These have been distributed to classroom teachers.



Soup cans have been reused to create supply containers for the art classes. They use them for storage of markers, color pencils, paint brushes, crayons.

School Impact:

Our goal continues to bring environmental awareness to the students and staff of Pinnacle View Middle School and to provide opportunities for our students to become strong leaders and to experience team work and collaboration through project planning and development. These actions have allowed our students to educate and inspire others with hopes they will develop into active and contributing members of an environmentally minded society. Pinnacle View Middle School is making difference and changing views. Students are learning and teaching each other about their impact on the earth at home, at school and at work by reducing the amounts of school materials that would otherwise go into the landfills by recycling or reusing and repurposing.



We have continued to move forward with recycling of school waste by having a large, yellow top Recycling Bin placed on campus for cardboard collection. Working to reduce waste, enhance recycling, focusing on repurposing and reusing materials to benefit our school community.



Community Involvement:



Pinnacle View Middle School Student and Staff Community -

A Repurposing Station has been assembled to allow any students or teachers to utilize materials to enhance their learning and curriculum. These items would otherwise end up in the trash and take up space in the local landfill. Items like plastic gallon jugs, 2 liter bottles, shoeboxes, plastic containers, paper towel and toilet tissue rolls, coffee cans, and composition notebooks, and cardboard boxes, box lids, and many other items that could be used to create projects. Science Fair display boards are stripped and stored in the repurposing station for use by teachers and students who need display materials for various reasons.



Supporting the Pulaski County Humane Society –

Students collect cardboard flats from the school cafeteria for use by the kittens and cats housed at the Pulaski County Humane Society while they are awaiting adoption.

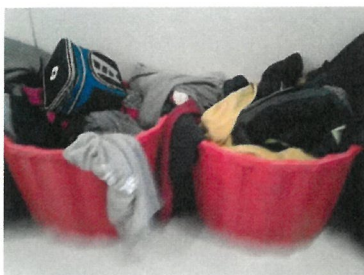


Events:

Celebrating Earth Day 2019 Activities will be shared with teachers to present school wide, monthly gardening, weeding and watering of the garden will continue as well as the collection of recyclables.

Proposed Use of Grant Monies:

Enhancing the lost and found stations with organizational bins, hangers for coats, jackets, backpacks and other items so that students can easily locate their items. We will purchase hardware, hooks, and screws and repurpose wire hangers, pallets, among other plastic bins to accomplish this.



There is also a need for larger recycling bins for the office staff, teacher's lounge and mail room. So we would purchase similar collection receptacles for these areas.

We will continue to study, learn, maintain and update the garden and outdoor classroom area.





Dear Mrs. Thompson,
I really enjoy being in your class. It is an amazing class to have first period. I want to thank you for all the amazing, extravagant projects and plans you have for us. I have to say, you are the teacher who can give the best help.

As a part of a STEM repurposing project titled 'What Can You Do With a Box?' the above student and his friend repurposed a cardboard box from the chrome book cart packaging to design a prop for the stage for a school play. It is a bush made from a card board box and old garland.

Regional Recycling School Grants



"ESTABLISHED 2016"

October 24, 2018

School Name: Pinnacle View Middle School

Address: 5701 Ranch Drive
Little Rock, AR 72223
501-447-8500

District: Little Rock School District

Current Student Enrollment: Nine Hundred 6th, 7th and 8th Graders

Contact:

Michael Poore, Superintendent
Little Rock School District
501-447-1000
810 West Markham
Little Rock, Arkansas 72201

Jay Pickering, Principal
Pinnacle View Middle School
501-447-8502
5701 Ranch Drive
Little Rock, AR 72223

Yvette Thompson, 6th Grade Science Teacher
Pinnacle View Middle School
yvette.thompson@lrsd.org
501-447-8512

Introduction:

This is year three for Pinnacle View Middle School! We are the newest middle school addition to the Little Rock School District and are continuing to grow and develop. During the 2016-2017 school year sixth graders were housed in the Leisure Arts Administrative Building of the campus. During this time the warehouse on campus was being renovated by Baldwin Shell to accommodate sixth and seventh graders for the school year 2017-2018. Phase II now houses nine hundred, fifty-three 6th, 7th and 8th grade students during the 2018-2019 school year.



Student and Staff Involvement:

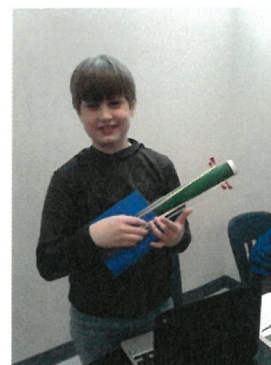
With growth comes change. We continue to make adjustments as we grow and are finding new ways to enhance student interests outside of the classrooms before and after school. Student interest in Environmental Education and Gardening continues. I am continuing to sponsor the students who show interest in the Environmental Education portion of the original club in order to continue to “Reuse, Recycle and Repurpose” at PVMS. Students from my current and previous science classes and those who were in the PVMS Environmental Education and Gardening club are volunteering to come to school early to collect recycling and take it to the recycling bin which we have been able to keep another year. Students who are in my current 6th grade science classes also help with collection during the school day. The entire staff is collecting paper and other recyclables for the students to pick up weekly or more often depending on the delivery of textbooks and materials in cardboard boxes.



We have increased efforts to recycle more paper so students have provided all new teachers with a painted and labeled, textbook box for collection of recyclable materials such as copier paper, cardboard, plastic water bottles, plastic containers in the classrooms, offices and copier rooms.



During the past school year students repurposed cardboard boxes from shipments for props to be used in performances by the Drama/Theatre teacher year after year.



Dynamics:

The students who continue to volunteer are a reflection of the demographics of our school as a whole.

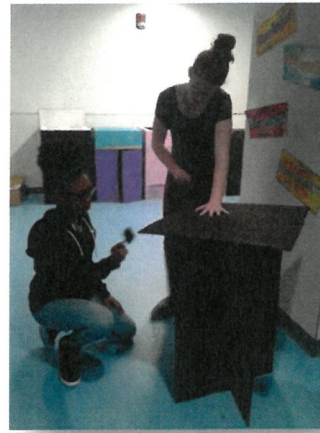


Ongoing Environmental Education (Reduce, Reuse, Recycle, Repurpose) and Gardening:

Since the opening of Pinnacle View Middle School our goal has been to establish a school community garden and to place emphasis on repurposing as many items as possible and to reuse as much as possible. Examples of this are the vegetable and perennial garden surrounding Phase I (Administrative Building).



Students continue to collect and reuse cardboard from shipments of furniture and textbooks in many creative ways. These are being used to support STEM projects throughout the school year. Students assisted in designing and engineering sets and stage props for the Drama/Theatre teacher and the G/T Teacher as well as use in the science classroom.



Coffee cans have been repurposed to hold plastic shopping bags for easy dispensing. These have been distributed to classroom teachers.



Soup cans have been reused to create supply containers for the art classes. They use them for storage of markers, color pencils, paint brushes, crayons.

School Impact:

Our goal continues to bring environmental awareness to the students and staff of Pinnacle View Middle School and to provide opportunities for our students to become strong leaders and to experience team work and collaboration through project planning and development. These actions have allowed our students to educate and inspire others with hopes they will develop into active and contributing members of an environmentally minded society. Pinnacle View Middle School is making difference and changing views. Students are learning and teaching each other about their impact on the earth at home, at school and at work by reducing the amounts of school materials that would otherwise go into the landfills by recycling or reusing and repurposing.



We have continued to move forward with recycling of school waste by having a large, yellow top Recycling Bin placed on campus for cardboard collection. Working to reduce waste, enhance recycling, focusing on repurposing and reusing materials to benefit our school community.

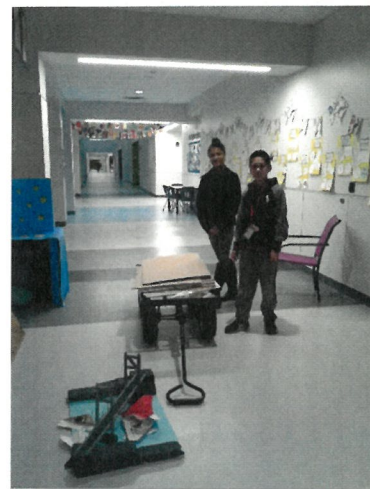


Community Involvement:



Pinnacle View Middle School Student and Staff Community -

A Repurposing Station has been assembled to allow any students or teachers to utilize materials to enhance their learning and curriculum. These items would otherwise end up in the trash and take up space in the local landfill. Items like plastic gallon jugs, 2 liter bottles, shoeboxes, plastic containers, paper towel and toilet tissue rolls, coffee cans, and composition notebooks, and cardboard boxes, box lids, and many other items that could be used to create projects. Science Fair display boards are stripped and stored in the repurposing station for use by teachers and students who need display materials for various reasons.



Supporting the Pulaski County Humane Society –

Students collect cardboard flats from the school cafeteria for use by the kittens and cats housed at the Pulaski County Humane Society while they are awaiting adoption.

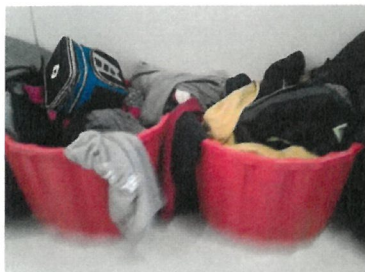


Events:

Celebrating Earth Day 2019 Activities will be shared with teachers to present school wide, monthly gardening, weeding and watering of the garden will continue as well as the collection of recyclables.

Proposed Use of Grant Monies:

Enhancing the lost and found stations with organizational bins, hangers for coats, jackets, backpacks and other items so that students can easily locate their items. We will purchase hardware, hooks, and screws and repurpose wire hangers, pallets, among other plastic bins to accomplish this.



There is also a need for larger recycling bins for the office staff, teacher's lounge and mail room. So we would purchase similar collection receptacles for these areas.

We will continue to study, learn, maintain and update the garden and outdoor classroom area.





Dear Mrs. Thompson,
I really enjoy being in your class. It is an amazing class to have first period. I want to thank you for all the amazing, extravagant projects and plans you have for us. I have to say, you are the teacher who can give the best help.

As a part of a STEM repurposing project titled 'What Can You Do With a Box?' the above student and his friend repurposed a cardboard box from the chrome book cart packaging to design a prop for the stage for a school play. It is a bush made from a card board box and old garland.